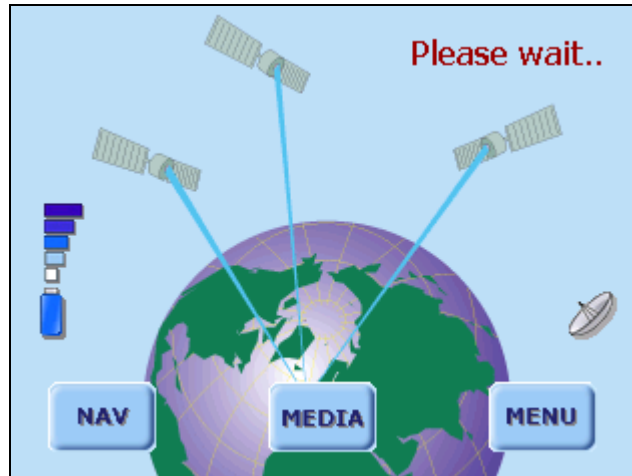


Important information about Microsoft ActiveSync

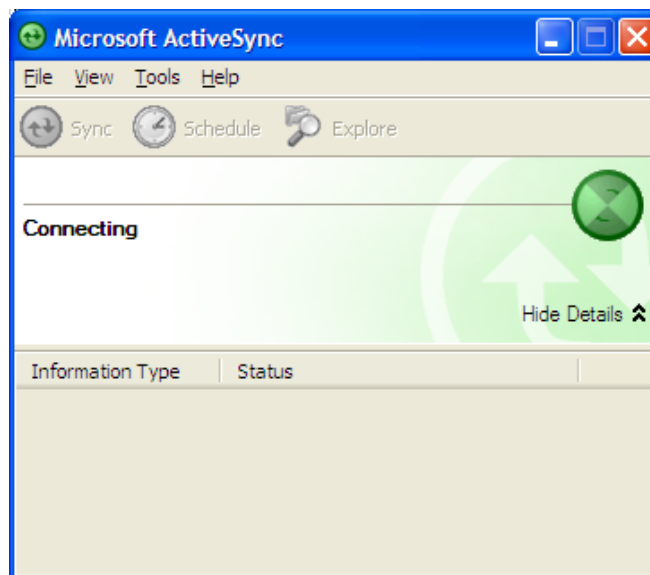
Once you have installed Microsoft ActiveSync you will need to follow the procedure below in order to allow the device to connect to the PC.

Switch on the Road Angel Navigator 7000 using the slider switch on the back of the unit. Wait for the unit to start up and display the screen below.

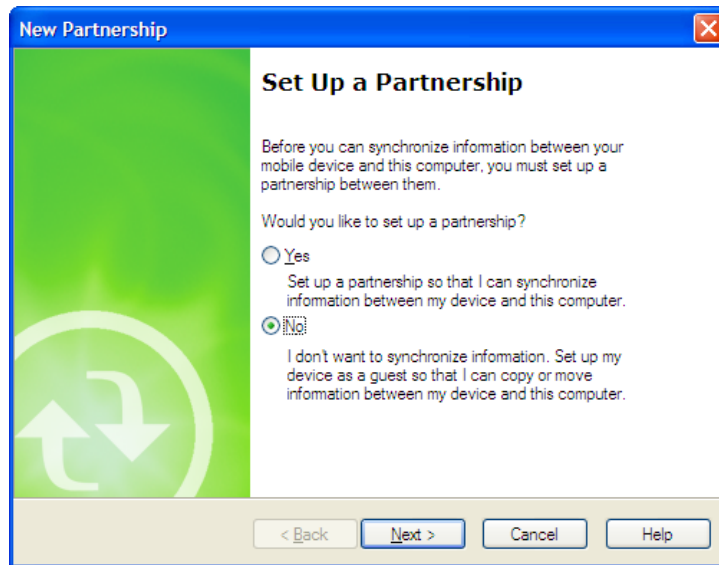


Connect the USB lead to your PC, then connect the small USB plug into the USB port on the side of Road Angel Navigator 7000.

After a brief pause, ActiveSync will automatically detect Road Angel Navigator 7000.



It will then prompt you to set up a partnership. Select No, and then click Next.



The device will appear connected as a Guest. The device is now connected to the PC and is ready to carry out an update.

