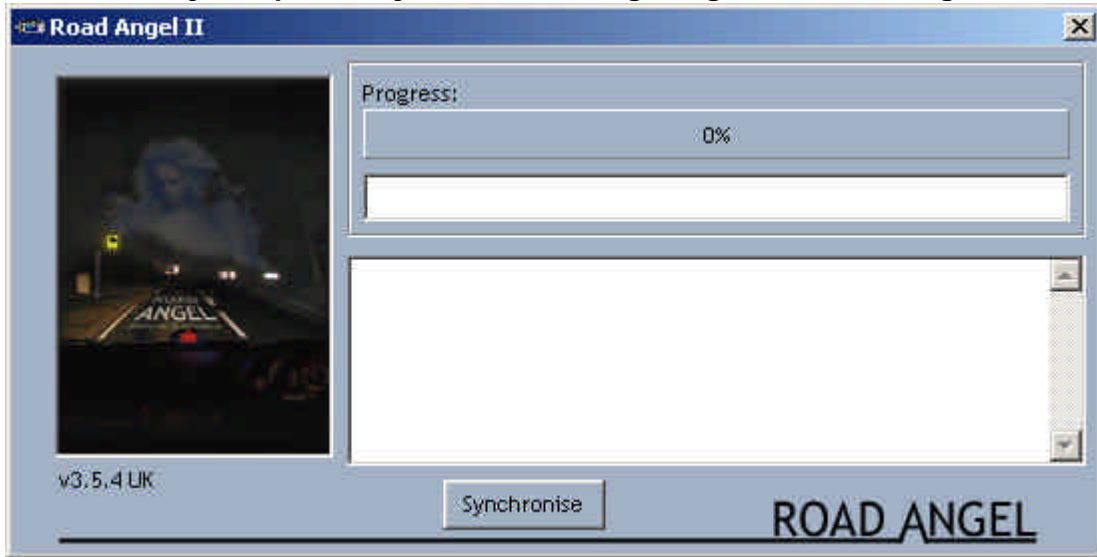


New Road Angel USB Driver Installation Instructions – Windows 2000

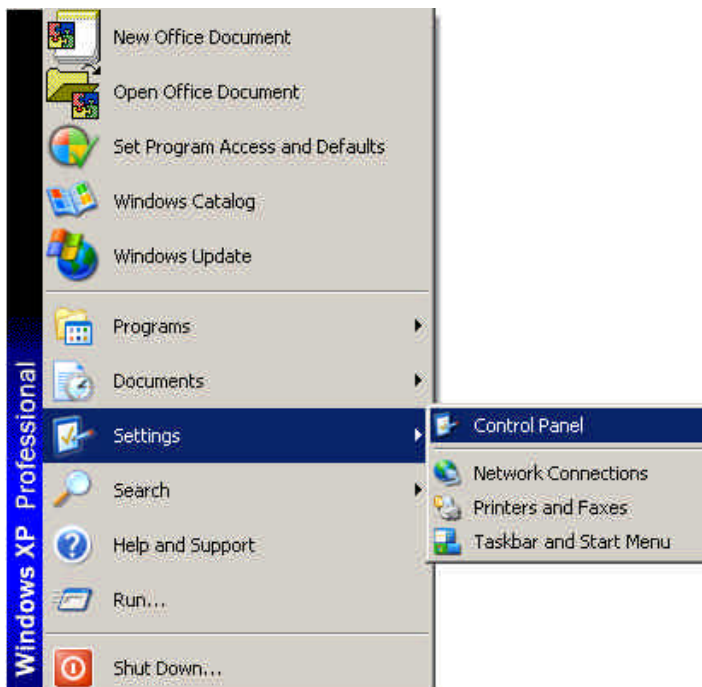
When I try to update my NEW Road Angel I get the following screen.



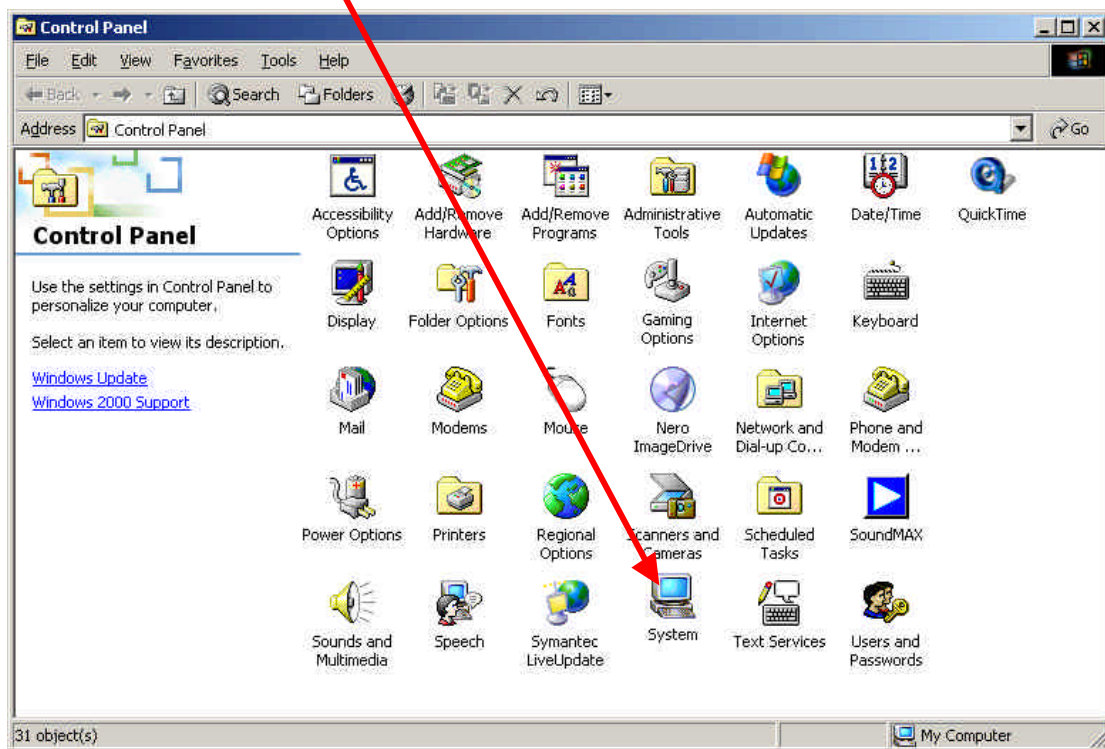
Check the following:

- The serial number starts with 01xxxxxx
- The Road Angel is directly connected to the computer (not through a USB hub) and is displaying either 'Message Please Register' or 'Searching for satellites'

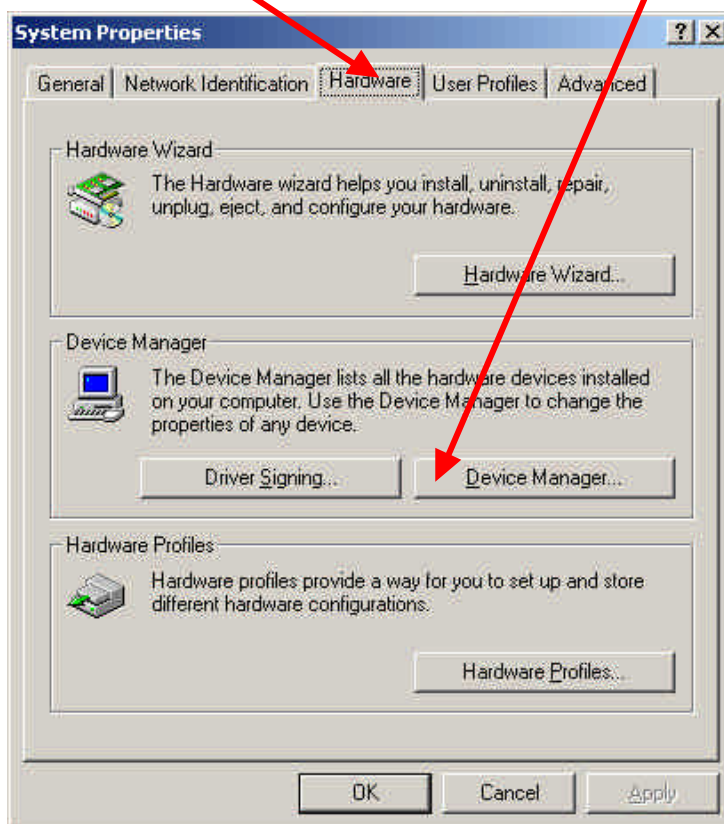
Open up 'Control Panel' from the 'Start' button



Double click on 'System'

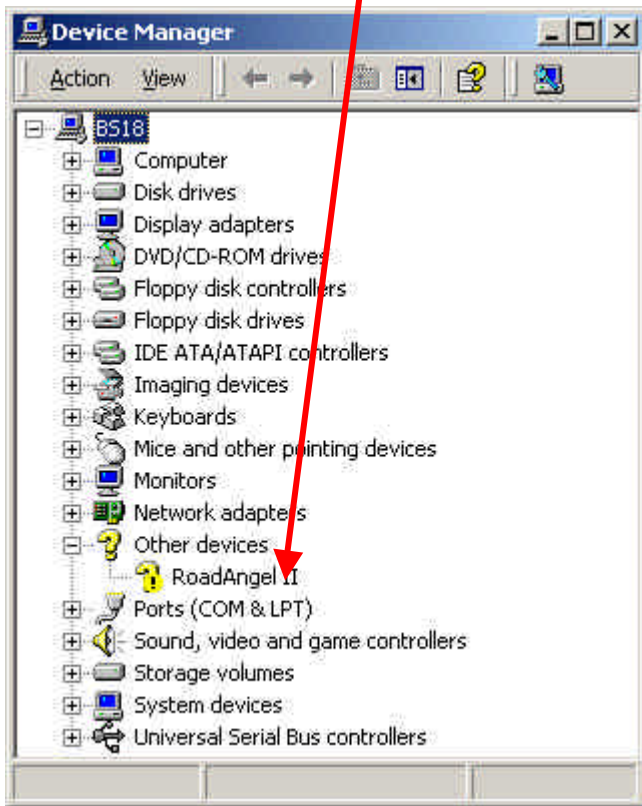


Select 'Hardware' and click on 'Device Manager'

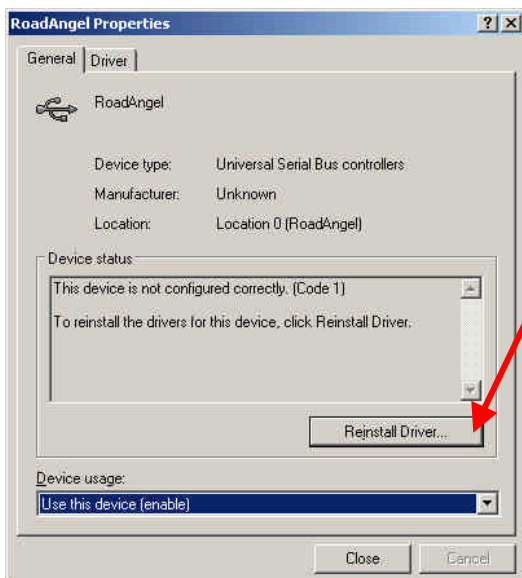


The following window will appear. You will see RoadAngel II but it will probably be under a heading of 'Other devices'

Double click on Road Angel II



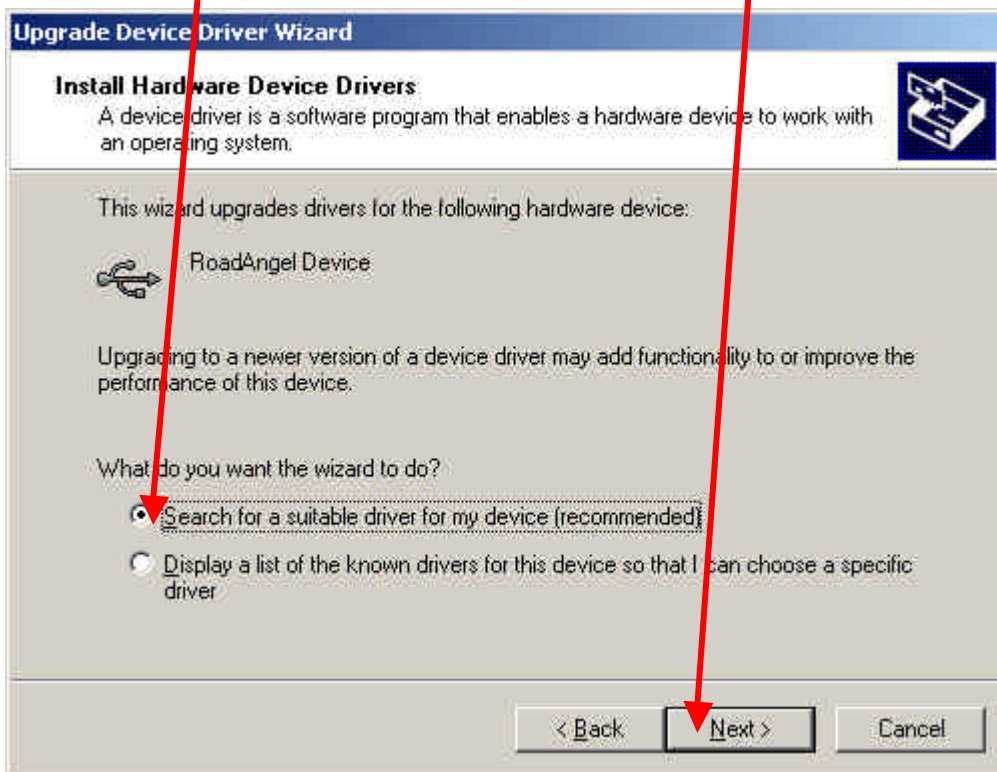
The following window will appear. Click on 'Reinstall Driver'



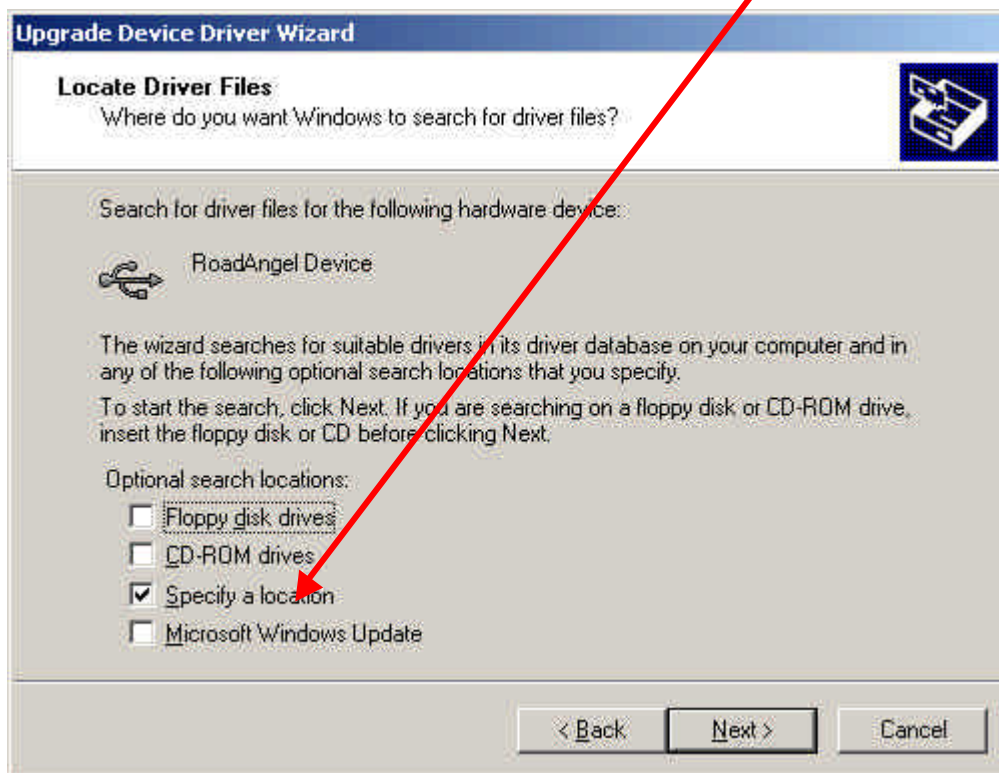
This starts the Driver wizard, click Next.



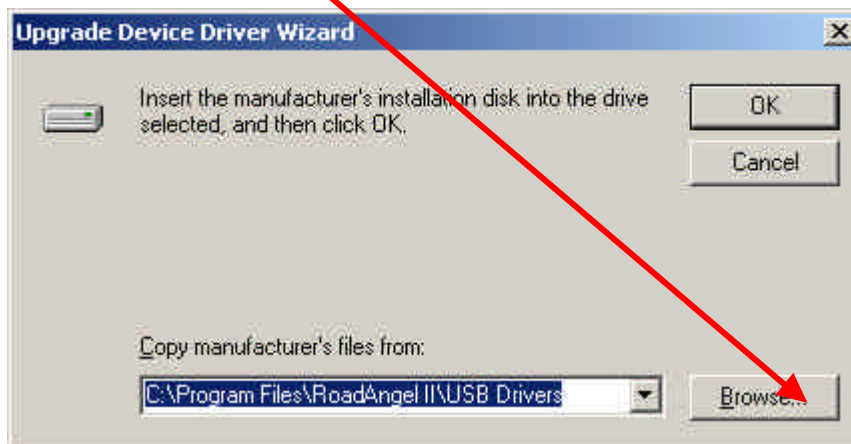
Select 'Search for a suitable driver....' and then click 'Next'



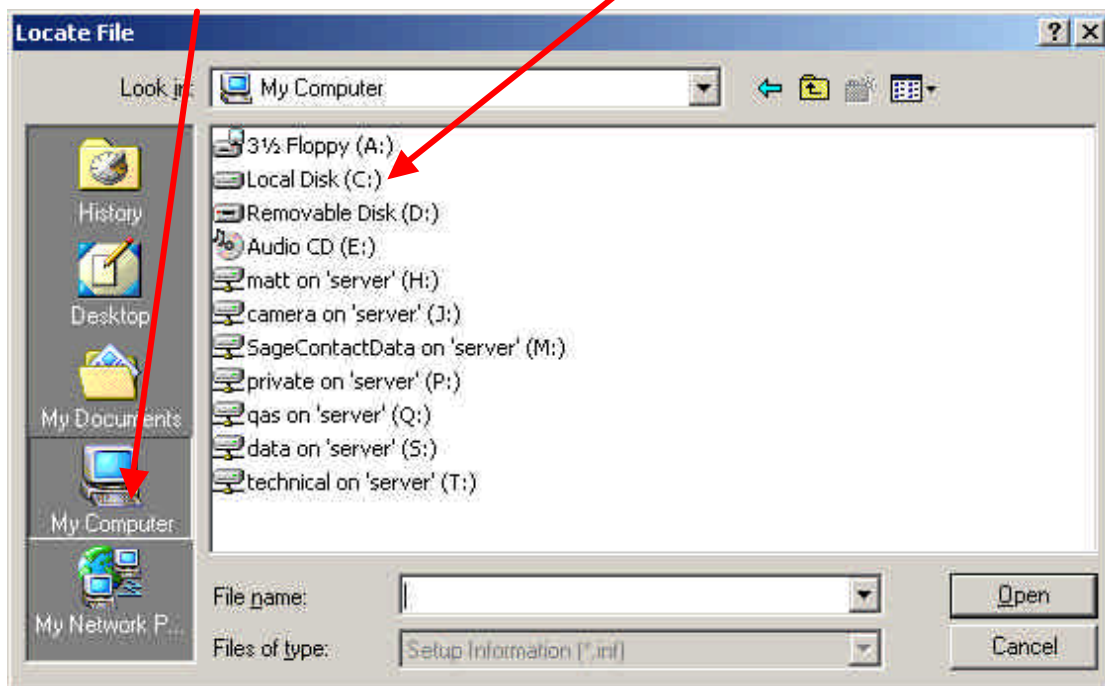
Ensure that the only option selected is 'Specify a location' click next



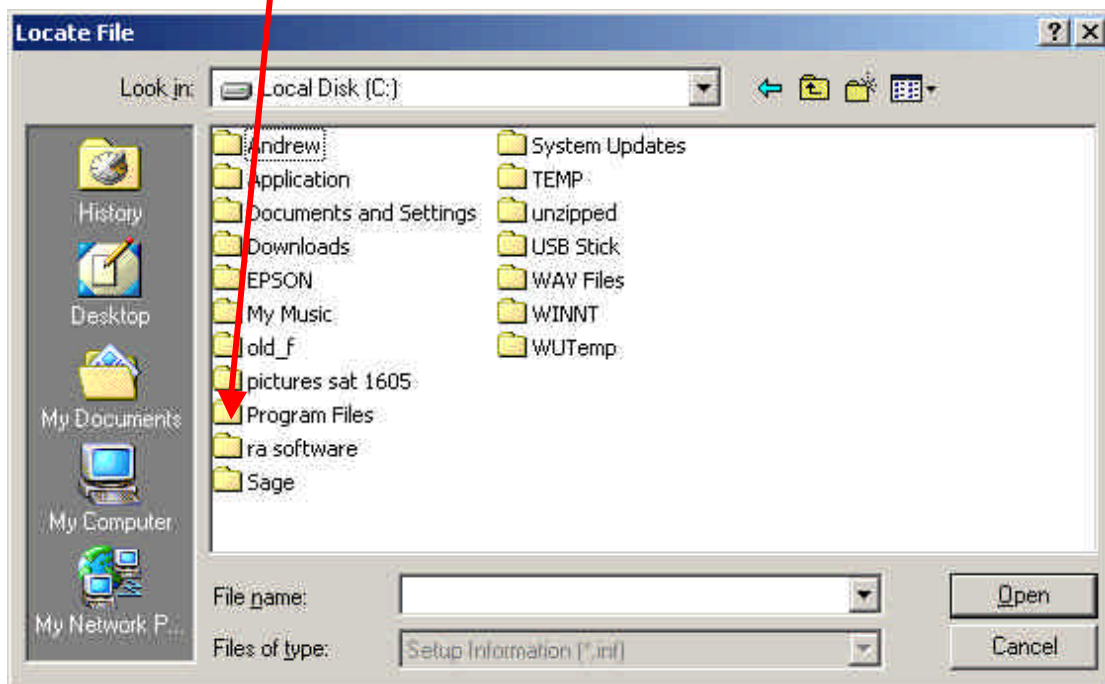
Then click Browse



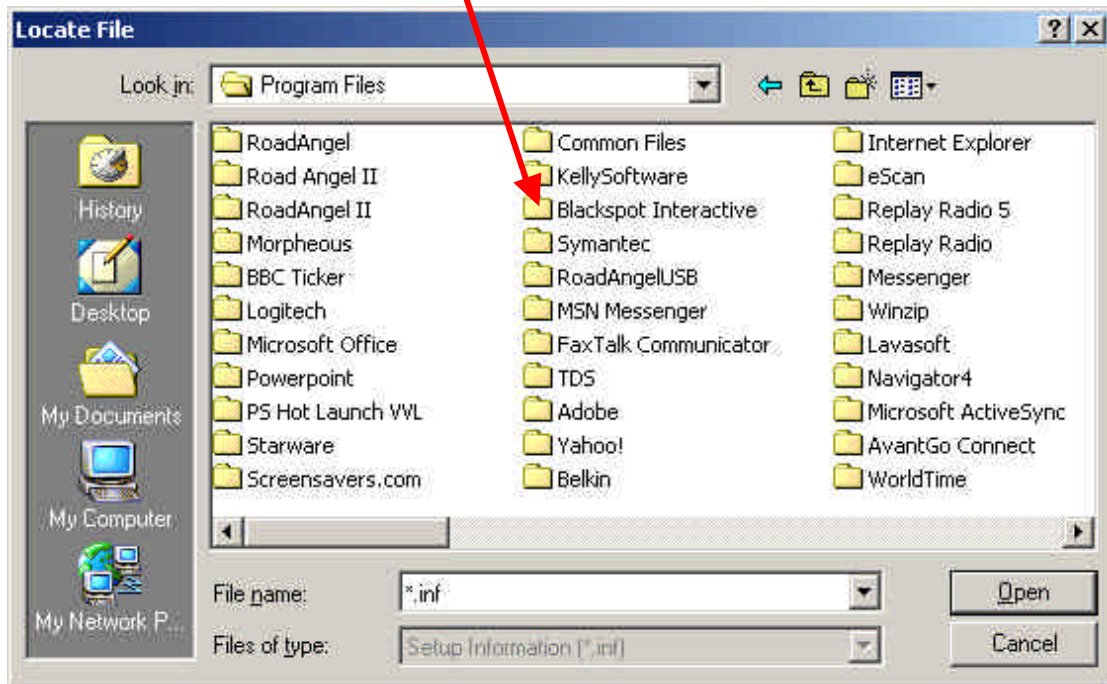
Click on My Computer, and then Double click on Local Disk (C:)



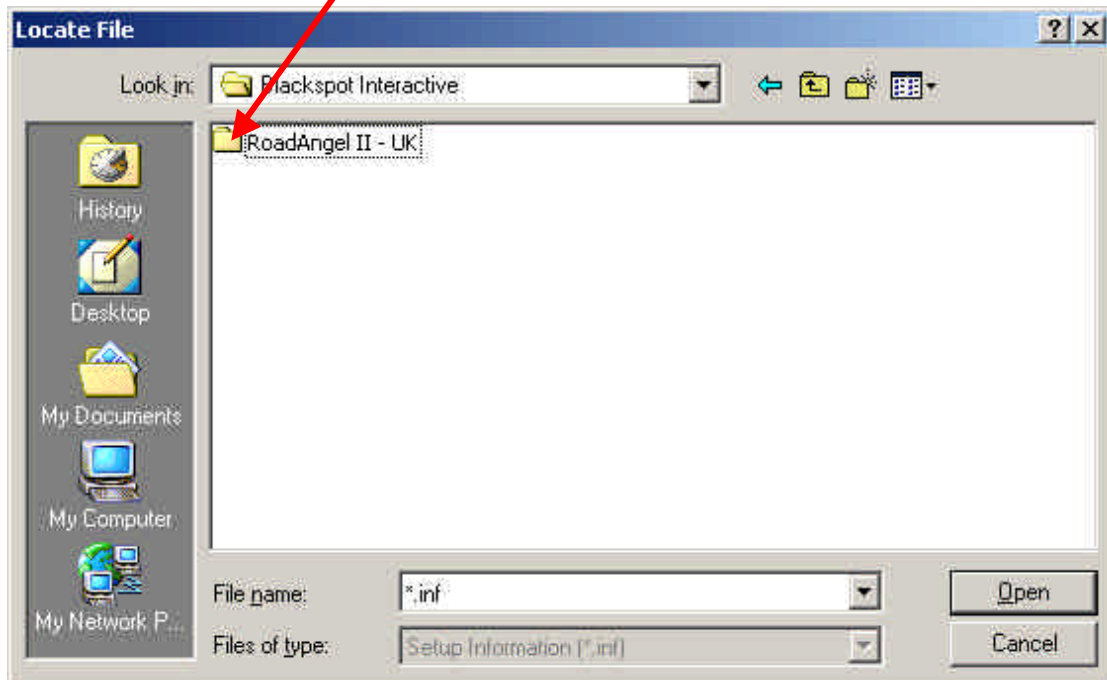
then click on Program Files



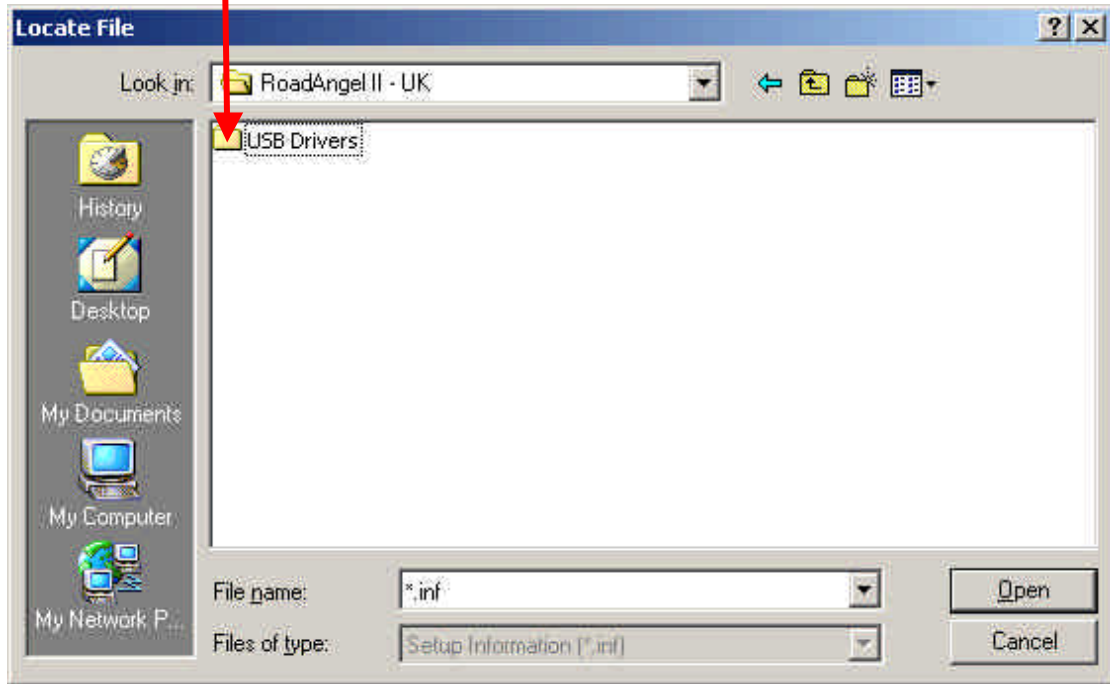
Locate and double click Blackspot Interactive



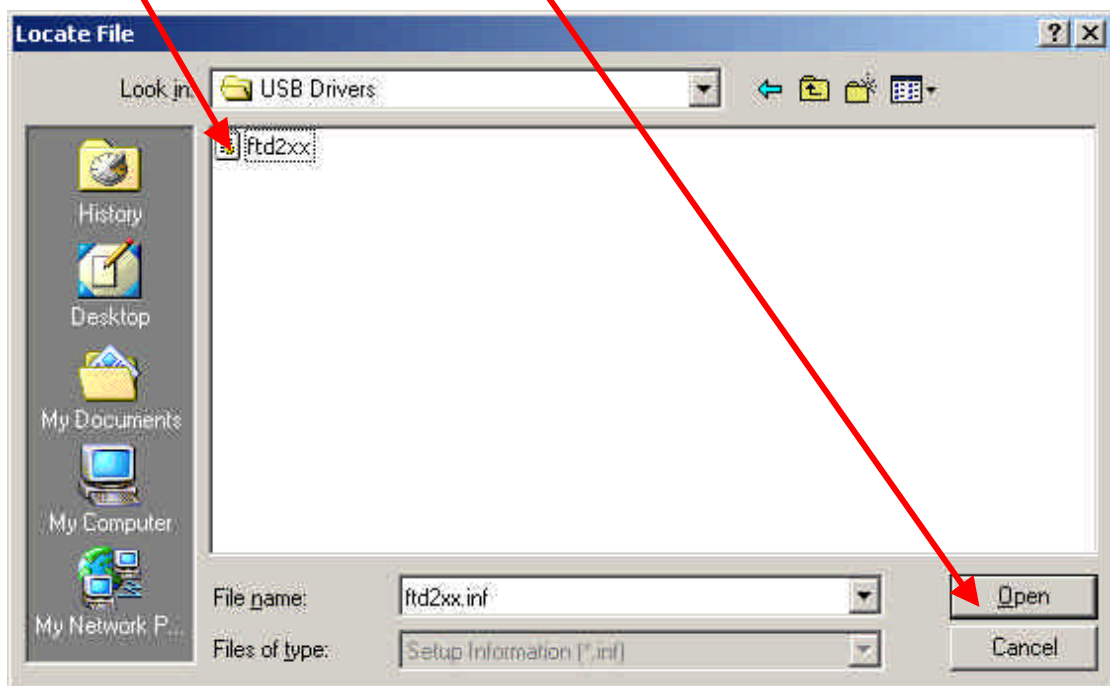
Double click on RoadAngel II – UK



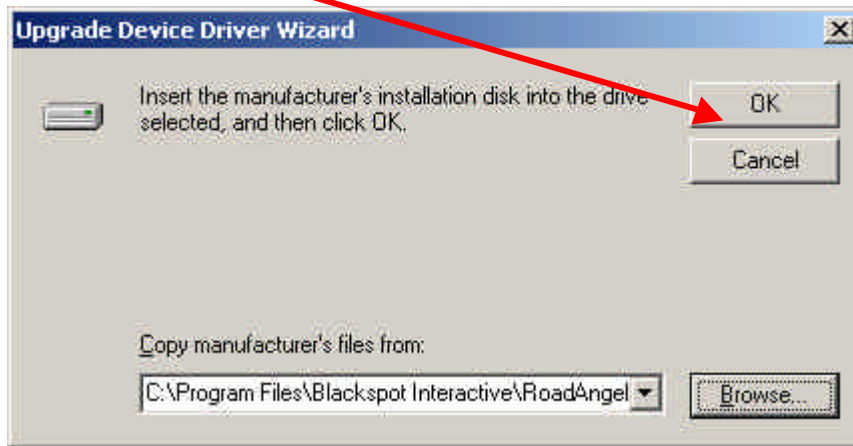
Double click on USB Drivers



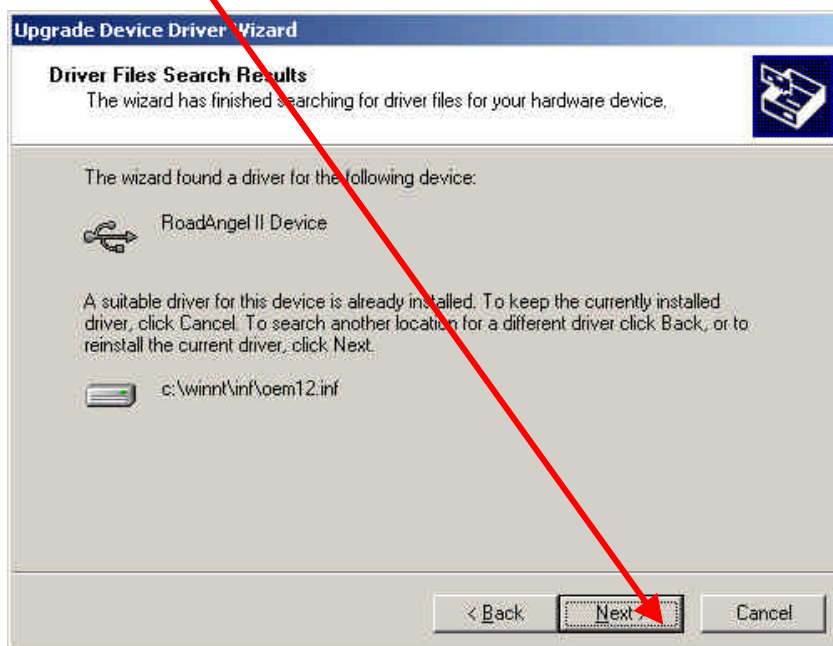
Click on the file ftd2xx, and then click Open



Click on 'OK'



Click on 'Next'



When the installation is complete the following window will appear. Click 'Finish' to close the window.

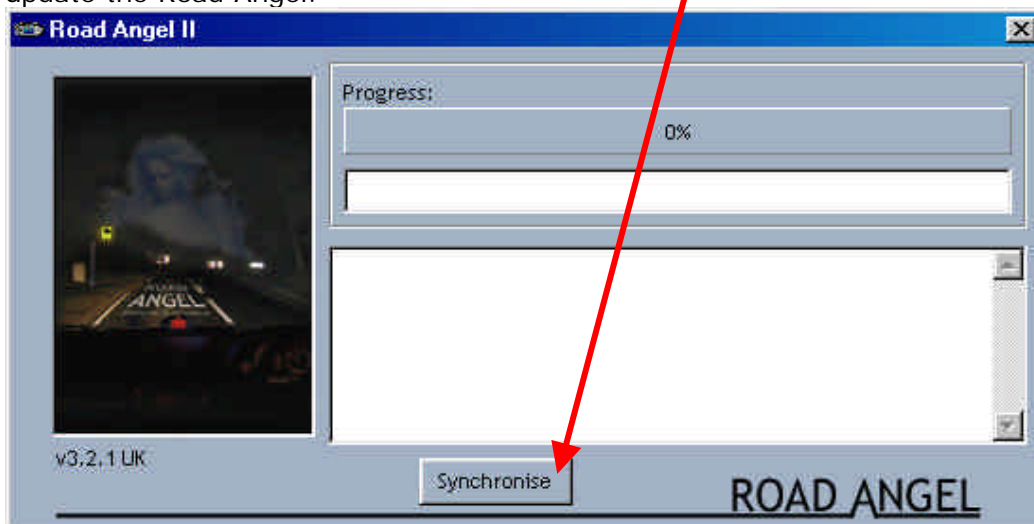


Locate the RoadAngel 2 icon on your desktop.



Double click on the RoadAngel 2 icon and the following window will appear. **Ensure the Road Angel is connected to the PC via the USB port and is displaying the message 'SEARCHING FOR SATELLITES' or 'Please register your Road Angel with Blackspot Interactive'**

Establish an internet connection; click 'Synchronise' and the software will start to update the Road Angel.



The blue bar will indicate the progress of the update. When it reaches 100% the Road Angel is up to date.

