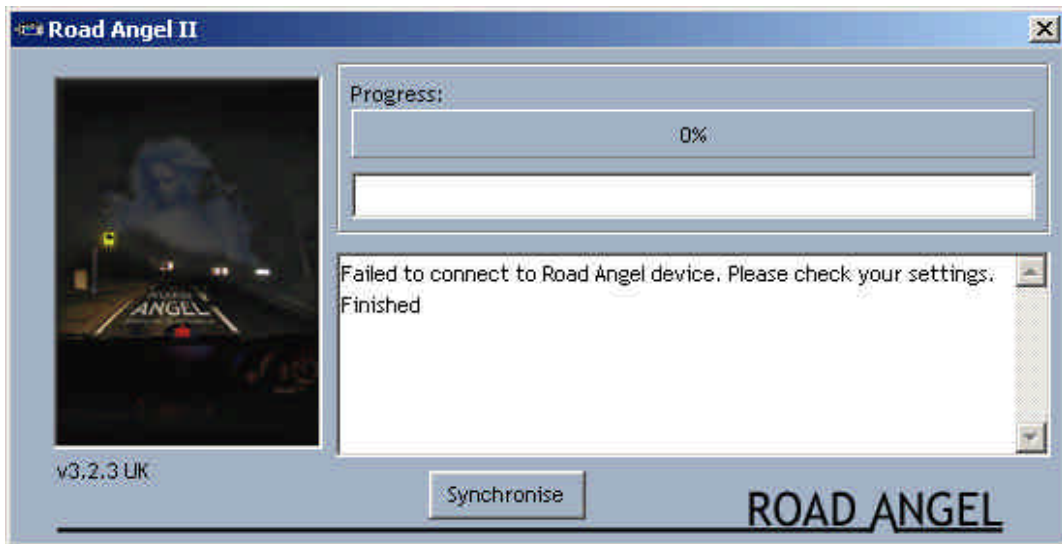


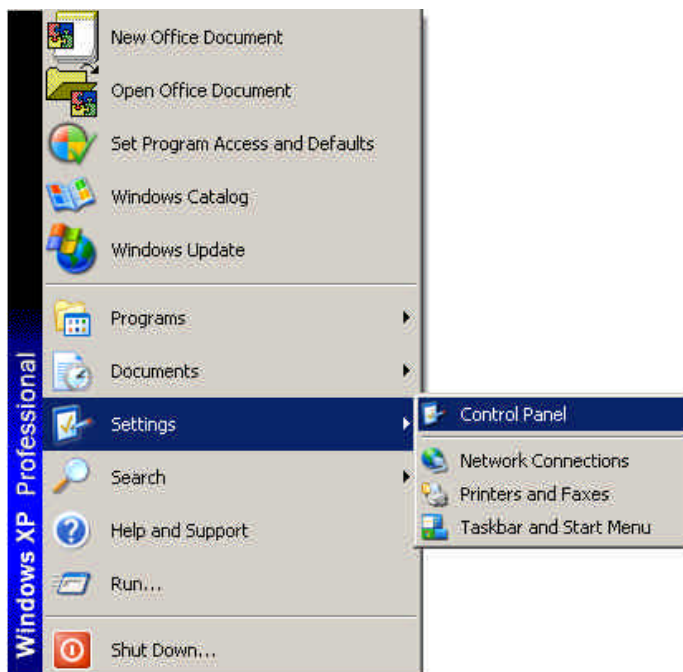
New Road Angel USB Driver Installation Instructions – Windows XP

When I try to update my New Road Angel I get the following screen.

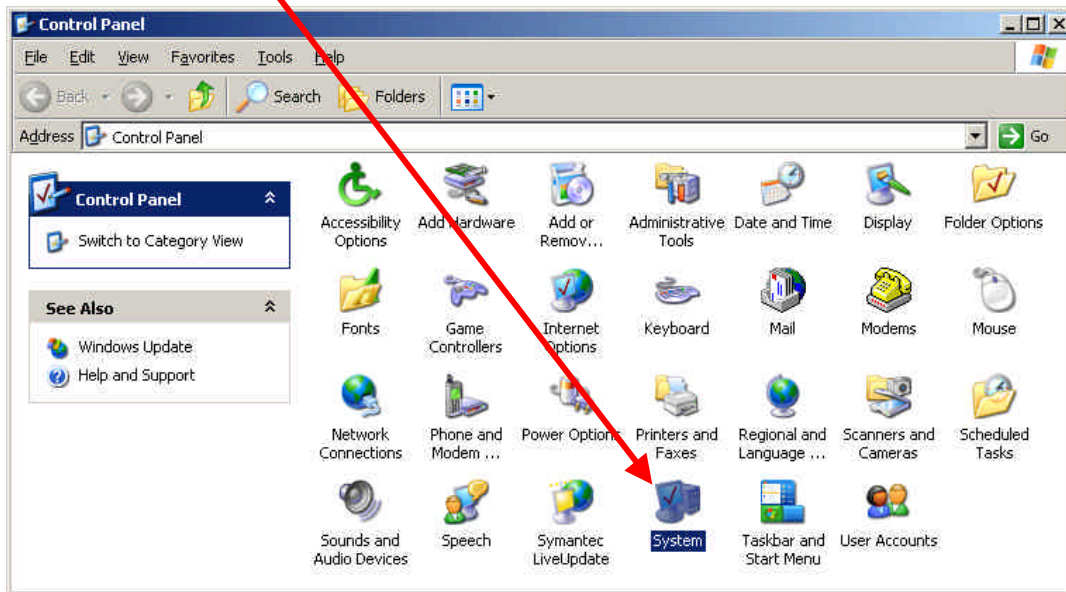



Check the following:

- The serial number starts with 01xxxxxx
- The Road Angel is directly connected to the computer (not through a USB hub) and is displaying either 'Message Please Register' or 'Searching for satellites'



Double click on 'System'



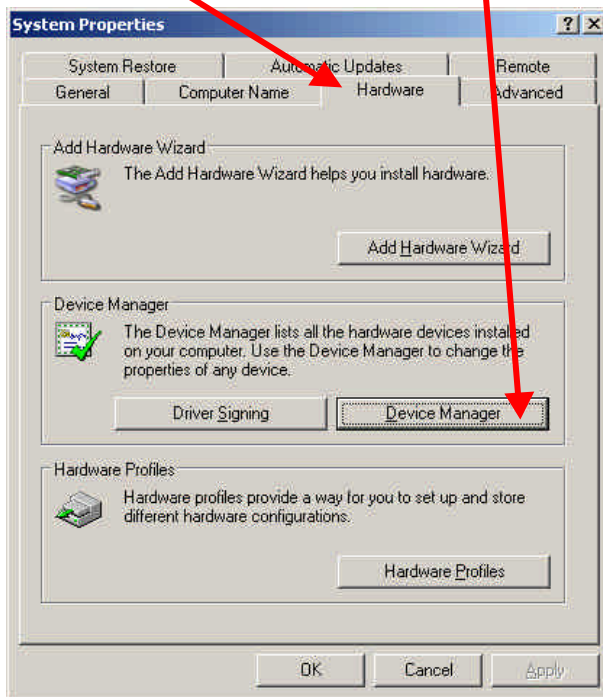
If you cannot see System  it's possible they are in Category view.



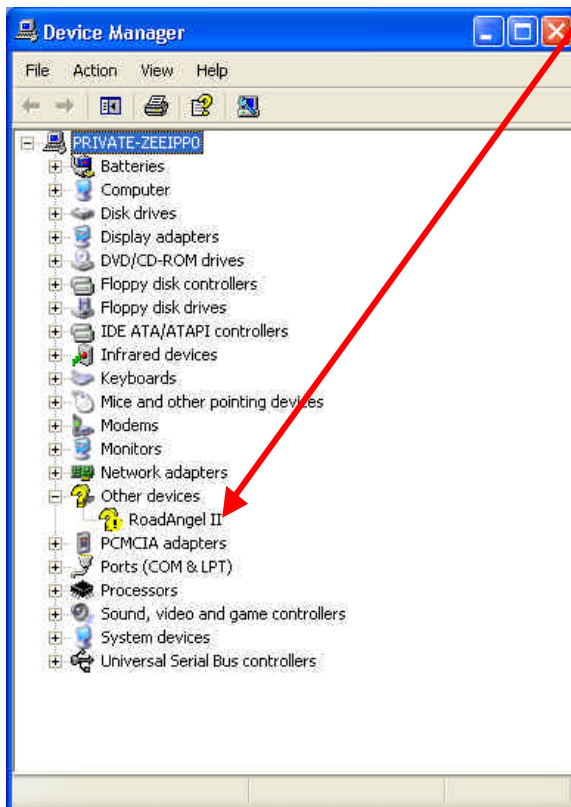
Click here to change it to Classic view.



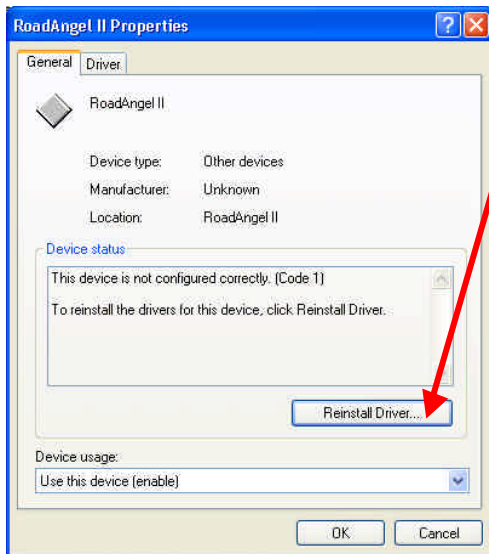
Select 'Hardware' and click on 'Device Manager'



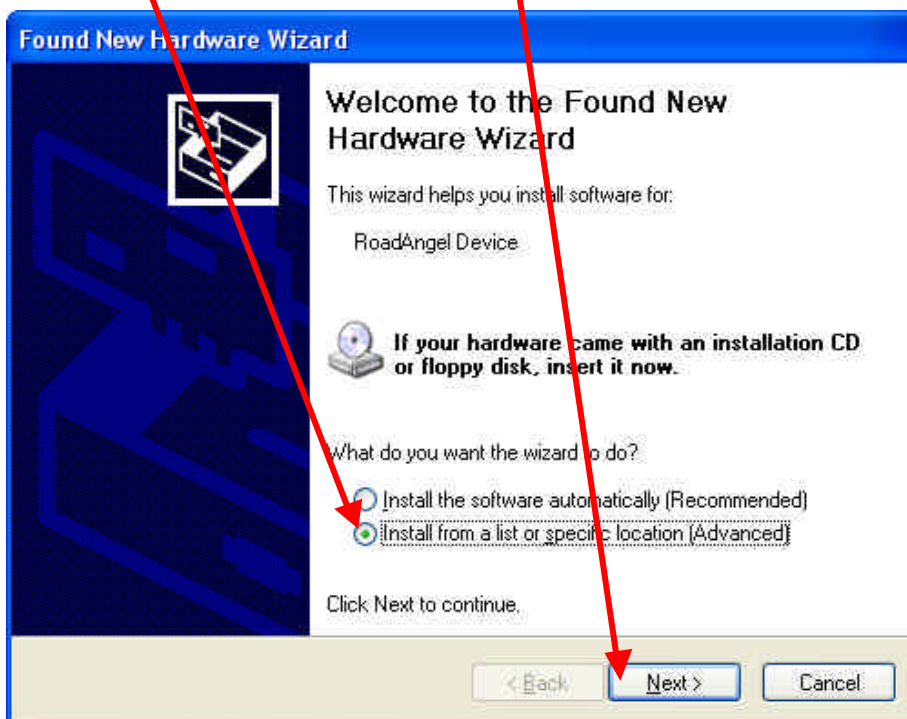
The following window will appear. You will see RoadAngel II under Other Devices. Double click on Road Angel II.



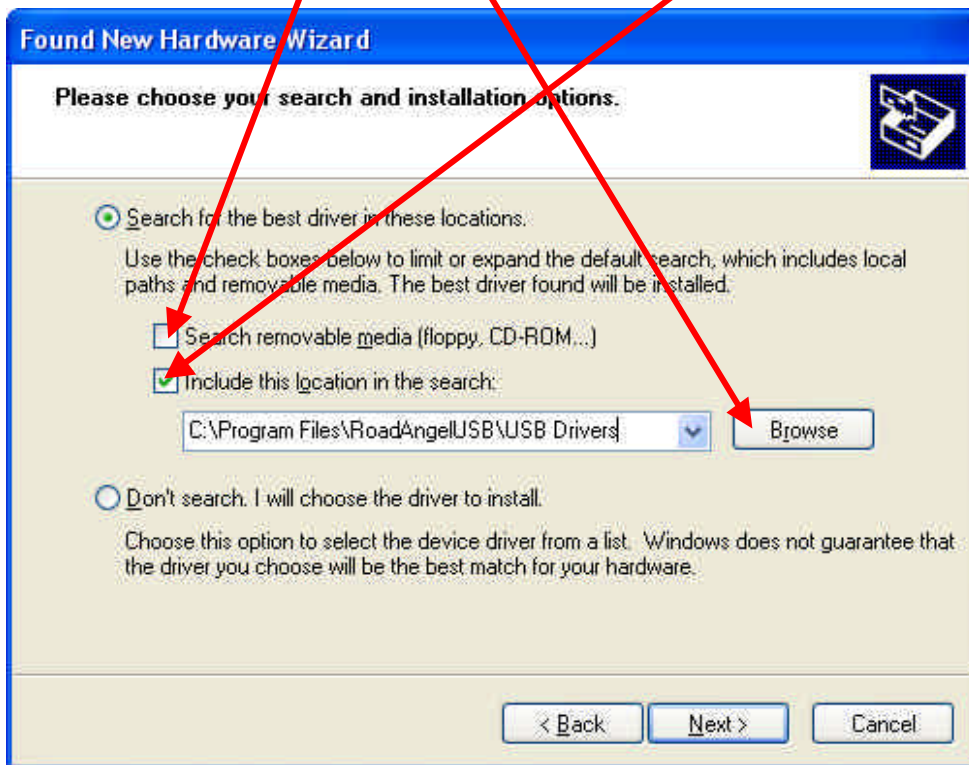
The following window will appear. Click on 'Reinstall Driver'



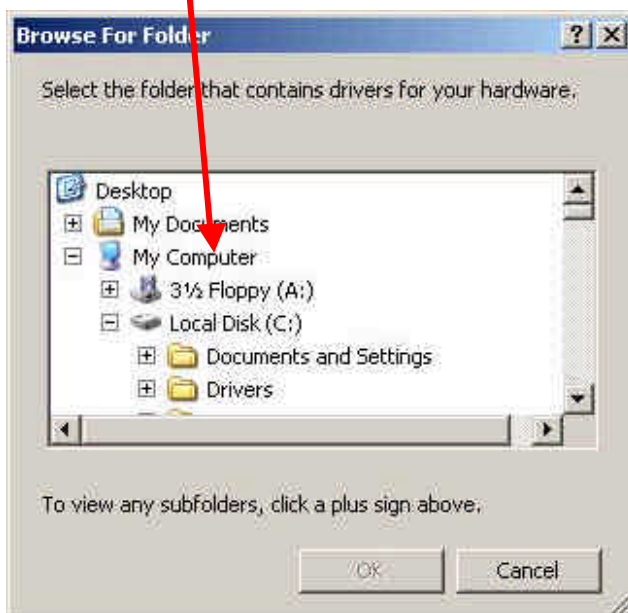
Select 'Install from a list... ' and then click 'Next'



Un-check the 'Search removable...' make sure 'Include...' is checked. and using 'Browse' find the location of the drivers as shown, click 'Browse'



Click on 'My Computer'



Click on Local Disk (C:)



Click on Program Files

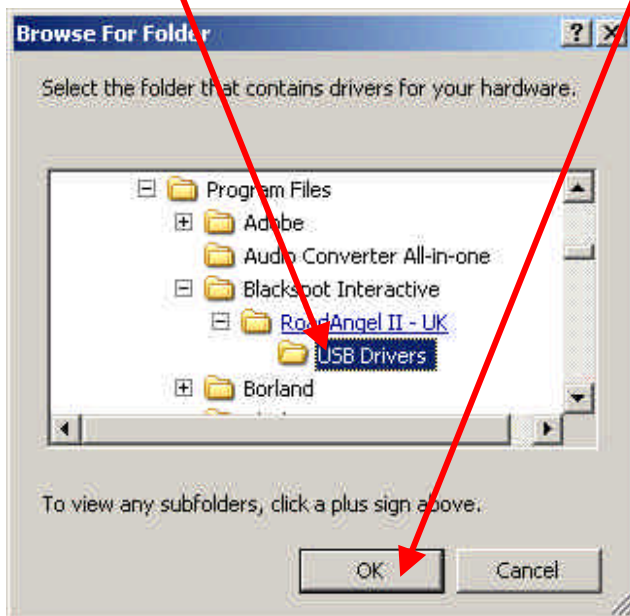


Click on Blackspot Interactive

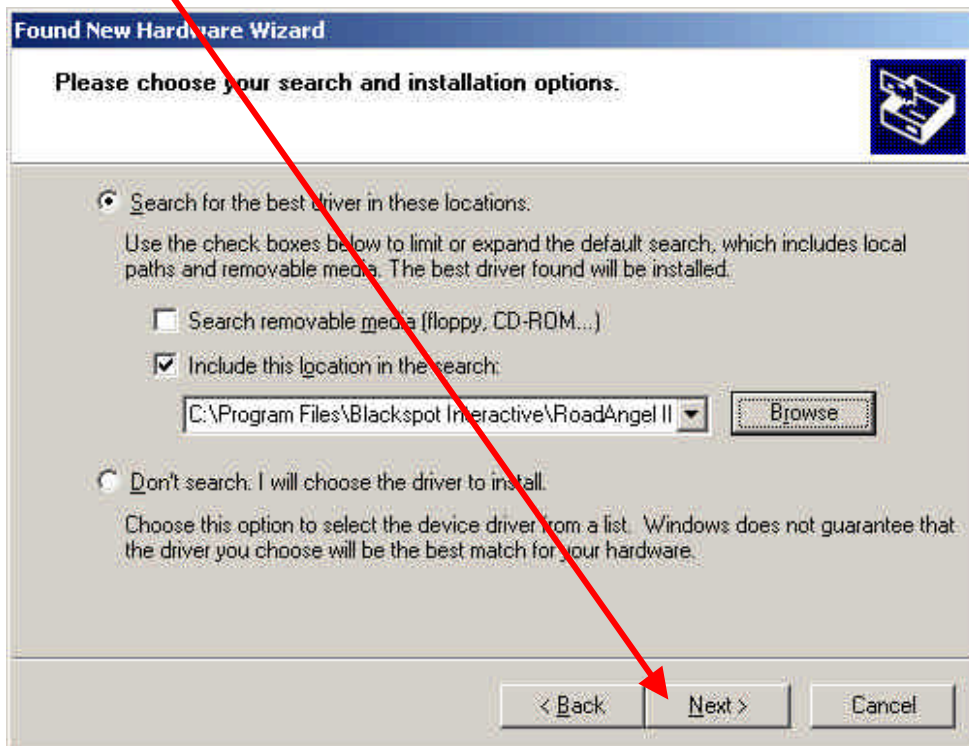


Click on RoadAngel II – UK

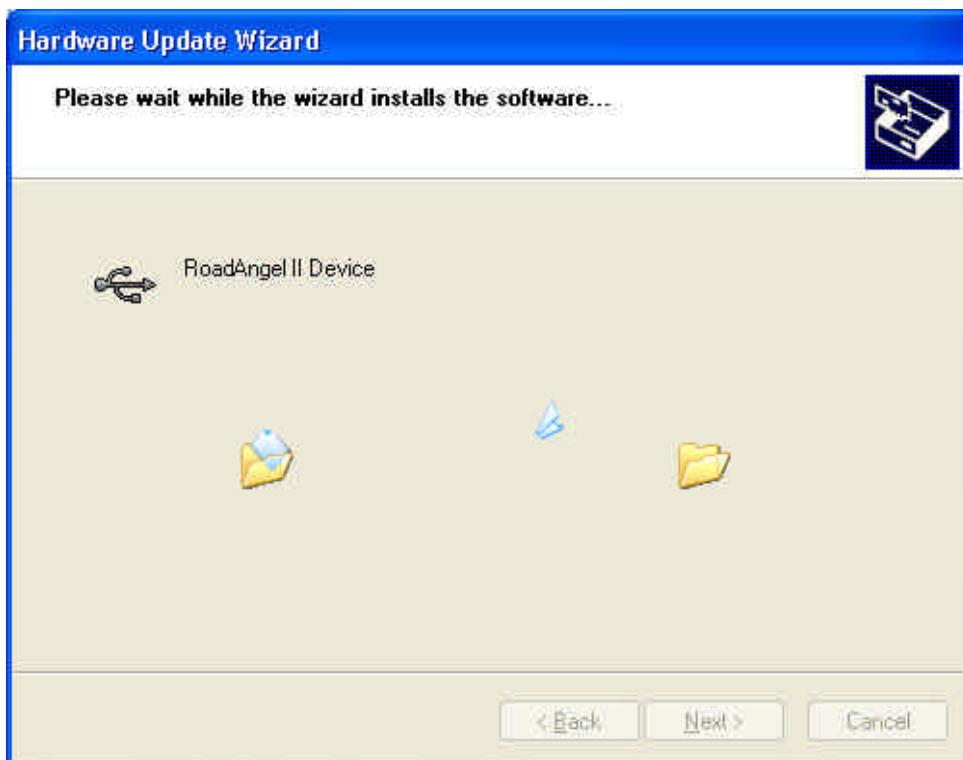
Click on USB Drivers. 'OK' becomes available, click on OK.



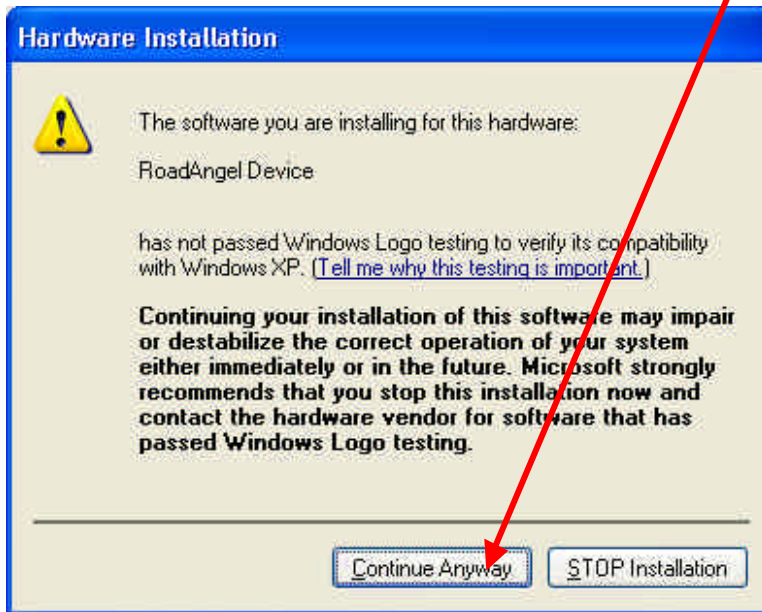
Click on 'Next'



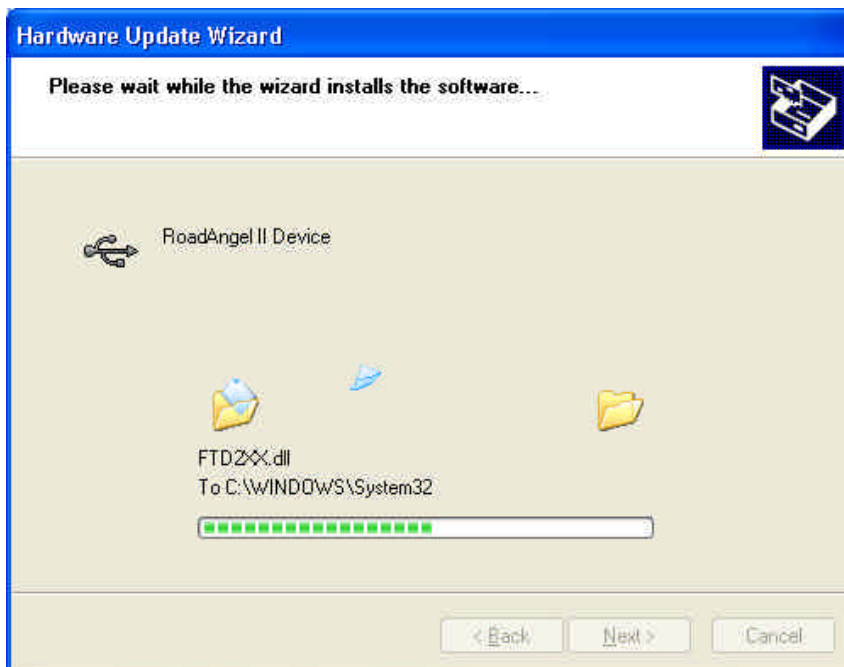
The software will then start to install.



You may shortly see this window appear. Click on 'Continue Anyway'



The installation will continue.



When the installation is complete the following window will appear. Click 'Finish' to close the window.

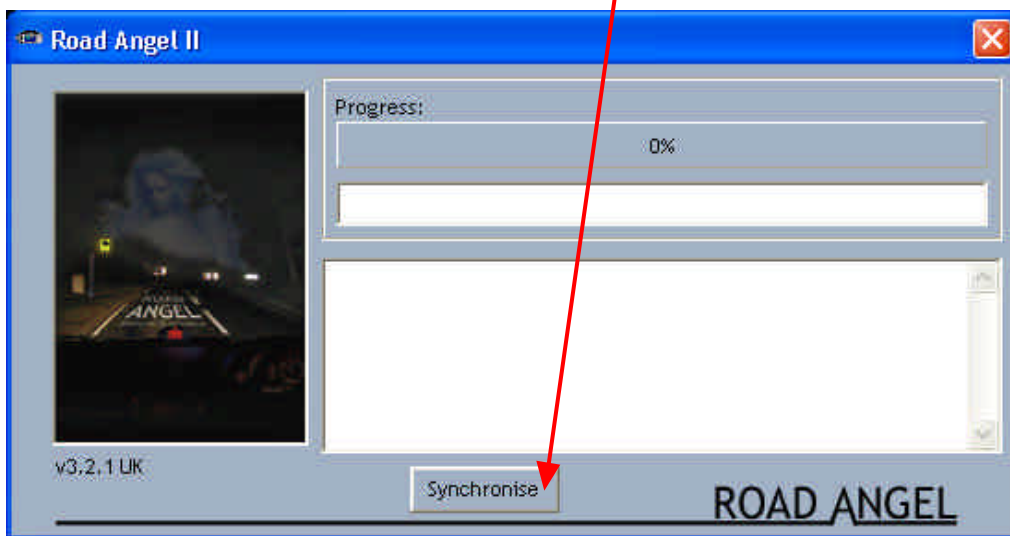


Locate the Road Angel2 - UK icon on your main desktop.



Double click on the Road Angel 2 icon and the following window will appear. **Ensure the Road Angel is connected to the PC via the USB port and is displaying the message 'SEARCHING FOR SATELLITES' If it says 'Please register your Road Angel with Blackspot Interactive' press the DELETE key on the Road Angel.**

Establish an internet connection, click on 'Synchronise' and the software will start to update the Road Angel.



The blue bar will indicate the progress up the update. When it reaches 100% the Road Angel is up to date.

